



PRESERVATION NEWS

Wichita County Historical Commission

Robert Palmer, Chairman

Bill Steward, Archivist

Wichita County Archives

720 Indiana Avenue

Wichita Falls, Texas 76301

Telephone 940-763-0020

Hours of Operation: Tuesday, Wednesday and Thursday 10:00am - 12:00pm & 1:00pm - 4:00pm

E-mail Address - archives@co.wichita.tx.us

www.wichitacountyhistoricalcommission.org/

Wichita County Texas Archives is on Facebook

AGENDA FOR MEETING

Lunch at 11:30AM

Meeting 12:00 Noon - 1:00pm

1. Call to Order 2. Introduction of Guests 3. Business 4. Program 5. Adjourn

Location: Luby's

Reservations no longer needed

Volume LXXXVI

September 7th, 2017

From the desk of Robert Palmer



All around the water tank, waiting for a train
A thousand miles away from home, sleeping in
the rain.

These haunting words were written by the Mississippi Singing Brakeman, Jimmy Rodgers. They became the theme of the Great Depression - tired, all alone, and away from home. It made no difference that they were written and recorded in 1928, one year before the bottom fell out of the world economy. They became a common lament in the words of future song writers. Life is not a flowing story, but a chain of moments. One of the strongest in my life happened in the summer of 1966. I was in uniform at Ft. Sill Oklahoma. It was very hot. We were marching in loose formation, late in the afternoon, from a day on the mortar range. As several hundred men trudged along, somewhere a soldier began singing:

“Away from home, away from home
Hot and tired and all alone.”

The rest of the soldiers picked up the words written by song writer Bobby Bare. As the dust clouded the air, the words struck a tone of loneliness. Jimmy Rodger’s legend lived on.

The progression of song writing themes follows common patterns. They are usually reflective of lifestyle: highs, lows, successes, and struggles.

Wichita County was populated by a vast variety of people, more than most locations. The oil industry brought in fortune seekers from all over the nation. Sheppard Air Force Base added to this. All shared one quality. They moved from somewhere else to here. All had left “home”. A very distinct love for one style of music developed. The music was very much in the style of Jimmy Rodgers.

Two brothers raised on the east side of Wichita Falls learned to play songs, songs that were grabbed on to by the varied population of the city and county. These songs were heavily influenced by Rodgers and the

Arnold Oliver

History of TxDOT

Rodgers imitators. They begin to play on the radio station. Actually, they played on two stations, a situation that caused them to play under two names, The Gibbs Brothers and The Miller Brothers. They played in other people’s bands, Governor Jimmie Davis and the like, and in their own band. They recorded for 4 Star Records under the name the Miller Brother’s String Band. They recorded many songs, the most recognized, “Loco Choo Choo”. They started the MB Corral, an extremely popular night spot for many years.

This type of music has been greatly associated with the rural south. After the Civil War, across the south, many families became share croppers. A section of land is 640 acres. A fourth of that is 160 acres, the size of most family-owned farms. A farmer could realistically farm about 40 acres with a single mule and one row equipment. Most share crops from the 1870’s to the 1920’s were 40 acres. About the time the introduction of the tractor started making 40 acre farming not practical, the introduction of the radio into homes brought Rodger’s style music to the farm. The list of people who list Jimmy Rodgers as an influence on their music is very much a list of sons of sharecroppers; Johnny Cash, Jerry Lee Lewis, Tommy Duncan, Marty Stuart, and, yes, Elvis Presley.

In our local history, we have Shamrock native Bill Mack, Wichita Falls' Gibbs Brothers, Electra's Billy Dees and Oklaunion's Richard Cook.

When we look at who we are, what we are, and what we believe, there are many things that influence all this.

Question of the Month...we want all of you to come with an answer...In the history of jukeboxes, what are the top three most played songs?



Wichita County Archive News

September 2017

September 1st starts the fall cycle for historical marker applications. The fall cycle lasts until November 15th.

Thanks to Robert Palmer for the WWII uniform.

Thanks to Doris Cross for the J. A. Kemp family memorabilia and photos.

On September 28, the Wichita County Heritage Society will sponsor a day trip to Fort Chadbourne and Buffalo Gap. For more information, call 723-0623

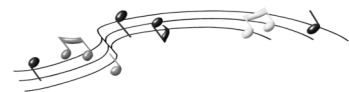
Museum of North Texas History News

Remember to contribute to the Museum on September 7th as part of TEXOMA GIVES.

Stroll 'n Roll on September 8th is a great opportunity to see the museums and art galleries of Wichita Falls.

North Texas Legends honors Robert Seabury on October 17th at Kemp Center for the Arts. Call for Reservations.

WICHITA FALLS MUSIC



In Fort Worth Dallas or Houston or
in Abilene

Down there she's waitin' the girl of
my dreams

In Wichita Falls or Waco or San
Angelo

She waits for me I know

**George Hamilton IV - Fort Worth
Dallas Or Houston**

He stood as the sun in the
mornin',

Rose up on Wichita Falls,
And there in the dim light she
watched,

As he sauntered on off down the
hall,

Brave Combo - Westphalia Waltz

I have run from St. Paul to Wichita
Falls

Called you from Sunny Baton
Rouge

I hocked everything from my
watch to my ring

Joe Ely - All Just to Get to You

Well it'll take your wheat, take your
corn

Even take the cotton balls

Suck the Red River just dry as a
bone

And dump it on Wichita Falls

**Guy Clark - Tornado Time In
Texas**

And they sprang us out right
quick, so we could get up on the
stick

To Wichita Falls by show time

**Shooter Jennings - Busted in
Baylor County**

I'll have regrets when my life's
said and done

But that Wichita Falls woman
won't be one

Can't say that I won't have regrets
when my life's said and done

But that Wichita Falls woman
won't be one

**Buddy Jewell - Wichita Falls
Woman**

She's alone in a cafe in Wichita
Falls

Back out on the highway towards
Oklahoma

I'm driving and crying and hating
it all

This old Chevrolet is raising the

sunset

Miranda Lambert - Wichita Falls

So if you see her around

Well just tell her I called

And that I'm sitting here alone

By Wichita Falls

American Aquarium - Wichita Falls

Now I walk from Dallas bearing the
Wichita Falls

Yeah I walk from Dallas bearing the
Wichita Falls

And if I could see my baby that
won't be no walk at all.

Merle Haggard - Stingeree

I walked from Dallas, I walked to
Wichita Falls

I say, I walked from Dallas, I walked
to Wichita Falls

Hadn't a' lost my sugar, [and] I
wasn't gonna walk at all.

**Blind Lemon Jefferson - Long
Lonesome Blues**

***As Falls Wichita, So Falls Wichita
Falls***

Pat Metheny & Lyle Mays